



# Community Advisory Boards Orientation 2020

Providence  
Schools

**COMMUNITY  
ADVISORY  
BOARD**

Families,  
Students, &  
Community  
Members



**SCHOOL  
BASED  
TEAM**

Teachers,  
School Partners,  
Staff, &  
Administration



**COLLABORATIVE  
TEAM**



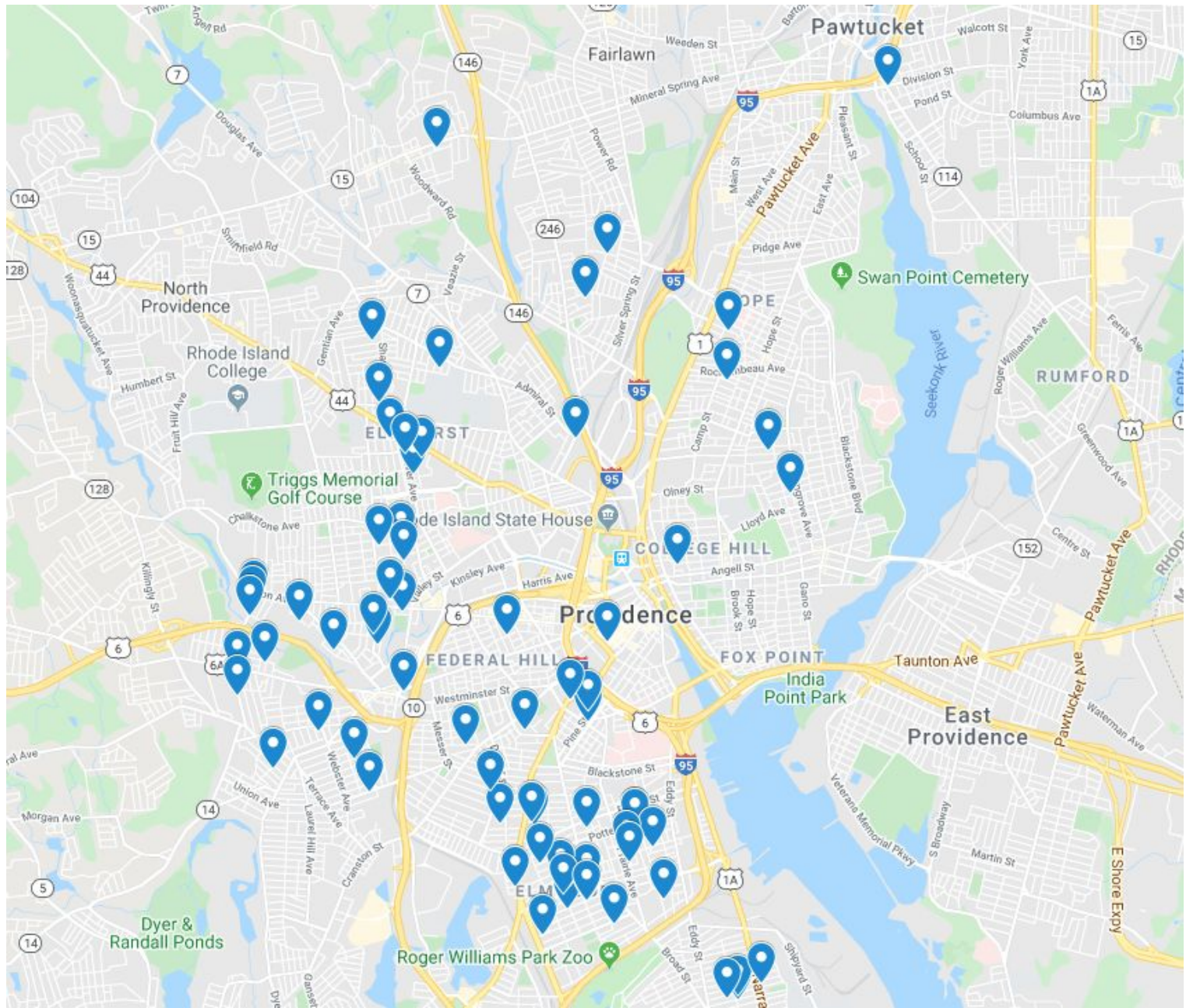
**RIDE AND LEA SUPPORTS**

# Thank you for joining the PPSD Community Advisory Boards

## Who are our new CAB members?

- **Over 80 applicants**
  - **Parent/Guardian - 28%**
  - **Community Members - 43%**
  - **Students - 36%**
  - **Business leaders - 3%**
  - **Community/Advocacy leaders - 16%**
  - **Alumni - 12%**







## **Purpose and Guiding Questions**

### **Objectives:**

- Build understanding of the goals of Community Advisory Boards
- Learn more about your team members

### **Guiding Questions:**

- What are the expectations of the Community Advisory Boards for Providence Public Schools?

# Why Community Advisory Boards?

The State's rating system requires schools in need of improvement to launch Community Advisory Boards (CABs) to:

- Promote collaboration between school-based teams and the communities they serve
- Empower community members with decision-making opportunities for schools in need of comprehensive support
- Serve the interest of equity and shared responsibility and community voice in school improvement



## **Community Advisory Boards and Subcommittees**

### **Elementary School CAB**

- Alfred Lima, Sr. Elementary School
- Carl G. Lauro Elementary School
- Dr. Martin Luther King Jr. Elementary School
- Robert L. Bailey Elementary School

### **Middle School CAB**

- DelSesto Middle School
- Gilbert Stuart Middle School
- Nathan Bishop Middle School
- Roger Williams Middle School
- West Broadway Middle School

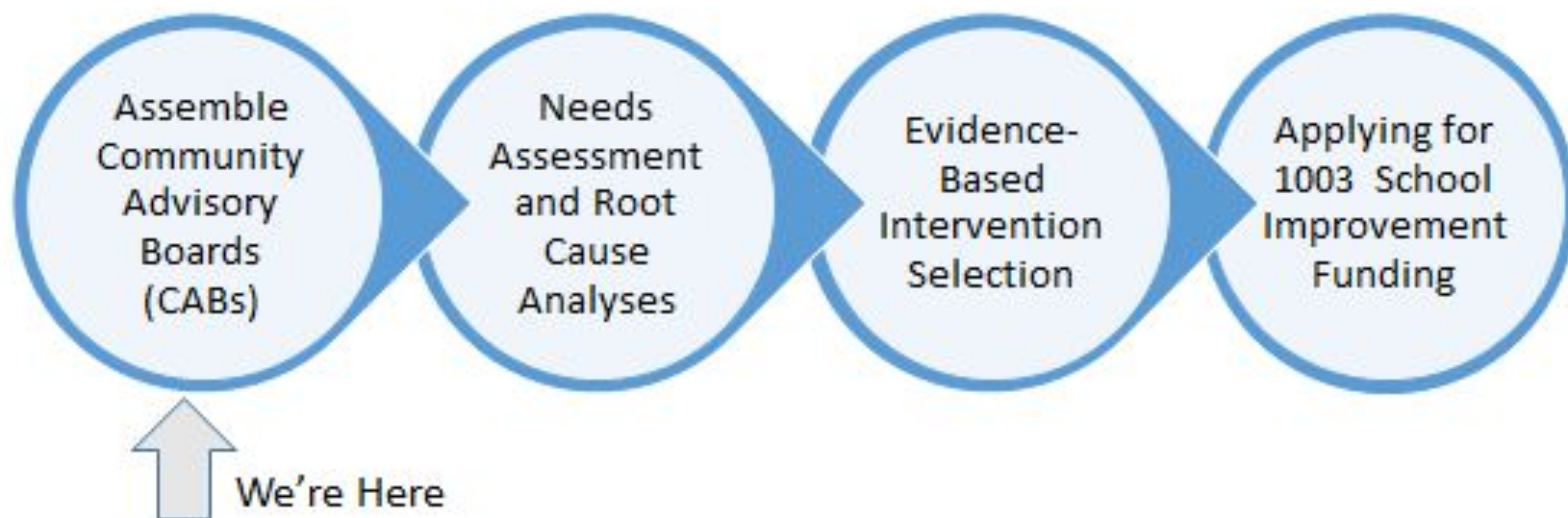
### **High School CAB**

- 360 High School
- Dr. Jorge Alvarez High School
- Central High School
- Hope High School
- Juanita Sanchez Education Complex
- Mount Pleasant High School

**\*Additional subcommittees as  
designated by RIDE**



# School Improvement Under ESSA





# Discussion on Shared Responsibility

## PPSD and RIDE:

- Develop Community Advisory Boards (CABs)
- Develop and/or manage needs assessment and root cause analysis

## Collaborative Team:

- Develop needs assessment/conduct root cause analysis
- Select interventions and create a school improvement plan
- Apply for school improvement funding

## CABs:

- Develop comprehensive school improvement plan (CSIP) content and school objectives
- Monitor and support
- Annual progress report to the Council of Elementary and Secondary Education

# Discussion on Shared Responsibility

- Introductions
- How did the CAB process go last year?
- What were some points of success and points of challenge?
- What questions do you have?



## Accomplishments from April - August 2019

- The creation and initial implementation of thirteen Comprehensive School Improvement Plans for individual schools
- Between May and August, we had over twenty-five working sessions dedicated to fostering collaboration between school leadership teams and community members
- A growing community of education advocates looking to build and expand community engagement in the district



# Timeline of CAB Activities

## Module 1

- Assembling Community Advisory Boards (CABs)
- Supporting CABs and CSI Schools

## Module 2

- Conducting a Needs Assessment & identifying priority needs
- Performing Root Cause Analyses

## Module 3

- Identifying Evidence Based Interventions (EBIs)
- Selecting EBIs aligned to needs and root causes

## Module 4

- Writing a Comprehensive School Improvement Plan (CSIP)
- Aligning resources to the CSIP

## Module 5

- Regularly monitoring progress of the CSIP
- Annually reporting on CSIP progress to the Council

**NOV - DEC**

**JAN - FEB**

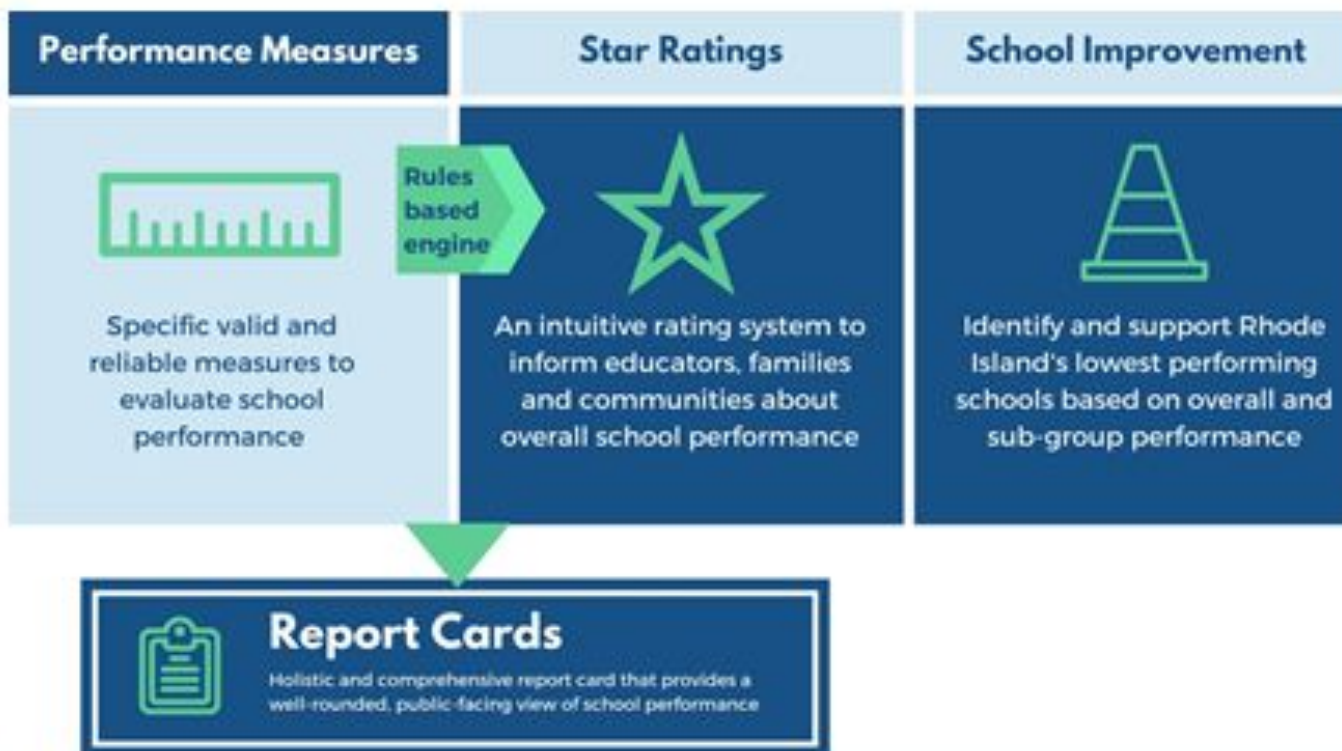
**MARCH**

**APR - MAY**

**SEPT - JULY**



# What are the components of Rhode Island's accountability system?



**<https://reportcard.ride.ri.gov>**

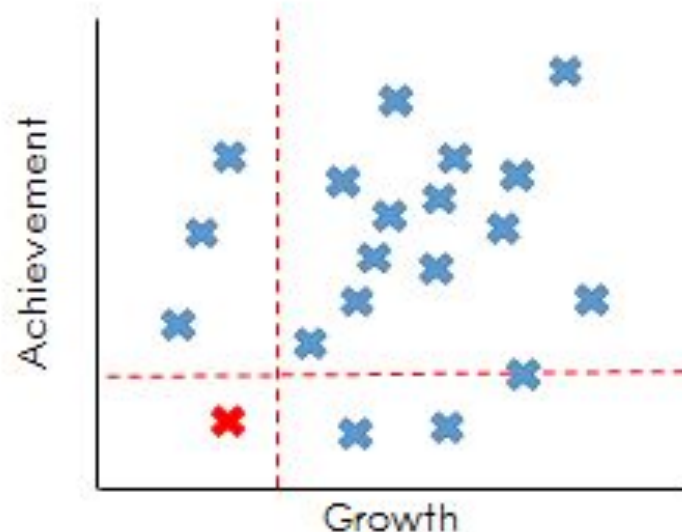
## What do School Star Ratings mean?

Star Rating	Means a school has...
	Strong performance on all indicators
	Generally strong performance
	Some areas of weakness
	Weaknesses at the overall school level
	The lowest performance in terms of achievement and growth or graduation

## Federal law (ESSA) requires identification of RI's lowest performing schools

A low performing school will be identified as a **1-Star School** in need of **"Comprehensive Support and Improvement"** if:

- 1) Both academic achievement and growth are in the bottom 5% of both measures;
- 2) Graduation rate is less than 67%; or
- 3) The school has the lowest score for all applicable non-graduation indicators, and one or two points for graduation if applicable.





## 2019 School Star Rating Performance Levels - Updated

Star Rating	Achievement – ELA and Math (Max. 8 Points)	Growth – ELA and Math (Max. 6 Points)	English Language Proficiency (Max. 4 Points)	Graduation Rate (Max. 5 Points)	Commissioner's Seal & Postsecondary Success (Max. 6 Points)	Exceeds Expectations, Absenteeism, & Suspension (Max. 15 Points)	# of Low-Performing Subgroups
★★★★★	6-8 points (3-4 per subject)	4-6 points (2-3 per subject)	3-4 points	4-5 points	5-6 points	12-15 points**	None
★★★★	5-6 points (2-4 per subject)		2 points		4 points (2+ per indicator)	10-11 points**	1 subgroup
★★★	7-11 total points*			3 points	3-4 points	7-9 points**	More than 1 subgroup
★★	5-6 total points*		1 point	2 points	2 points	5-6 points**	
★	2 points	2 points		1 point			

# CSIP updates

- Non-curricular items in CSIP budgets are being purchased and delivered to schools
- Schools have been conducting professional development since the beginning of the Fall as outlined in CSIPs.
- Curricular materials are on hold until RIDE and the district determine the universal ELA/Math products and the scope of their implementation (Eureka has been ok'd for K-5).

**Next Meeting:**  
Providence  
Comprehensive Support and Improvement  
Convening

**What:** District leadership and staff will collaborate with school-based teams and CAB members to prepare for the school improvement process. Staff from the Office of School Improvement at RIDE will provide on-site technical assistance and support.

**When:** February 3rd, 2020 from 3:00 pm - 7:00 pm (for school teams) and 5:00 - 7:00 pm (for CABs)

**Location:** TBD

# Small Group Break-outs

<b>Monitor CSIP, renew CSIP, &amp; anticipating redesign</b>	Alvarez, DelSesto, Stuart, Hope, JSEC, MPHS
<b>Monitor CSIP &amp; renew CSIP</b>	Bishop, Lima, West Broadway
<b>Monitor CSIP</b>	Bailey, Lauro, Williams, King
<b>Create CSIP</b>	360, Central



# Providence Schools

Questions?

**Pascale Thompson**

[Pascale.Thompson@ride.ri.gov](mailto:Pascale.Thompson@ride.ri.gov)  
[schoolimprovement@ride.ri.gov](mailto:schoolimprovement@ride.ri.gov)

**Christopher Sanacore**

[christopher.sanacore@ppsd.org](mailto:christopher.sanacore@ppsd.org)

**401-456-9100 ext. 11356**

# Acronym Guide

- **1003** - School Improvement Grant Money
- **CAB** - Community Advisory Board
- **CSI** - Comprehensive Support and Improvement
- **CSIP** - Comprehensive School Improvement Plan
- **IEP** - Individual Education Plan for differently abled students
- **LEA** - Local Education Agency (districts)
- **MLL** - Multilingual learners
- **PPSD** - Providence Public School District
- **RIDE** - Rhode Island Department of Education
- **SEA** - State Education Agency (RIDE)